

Tri-BACKUP 6

Immediate Actions

Guide

Table of contents

Immediate Actions	3
Organization of the window	3
Menu type of action	3
Areas of folders selection	4
Display options	4
The list of contents	4
Information on selection	4
Settings and execution buttons	4
Settings	4
Analyze	4
Execution of an action	5

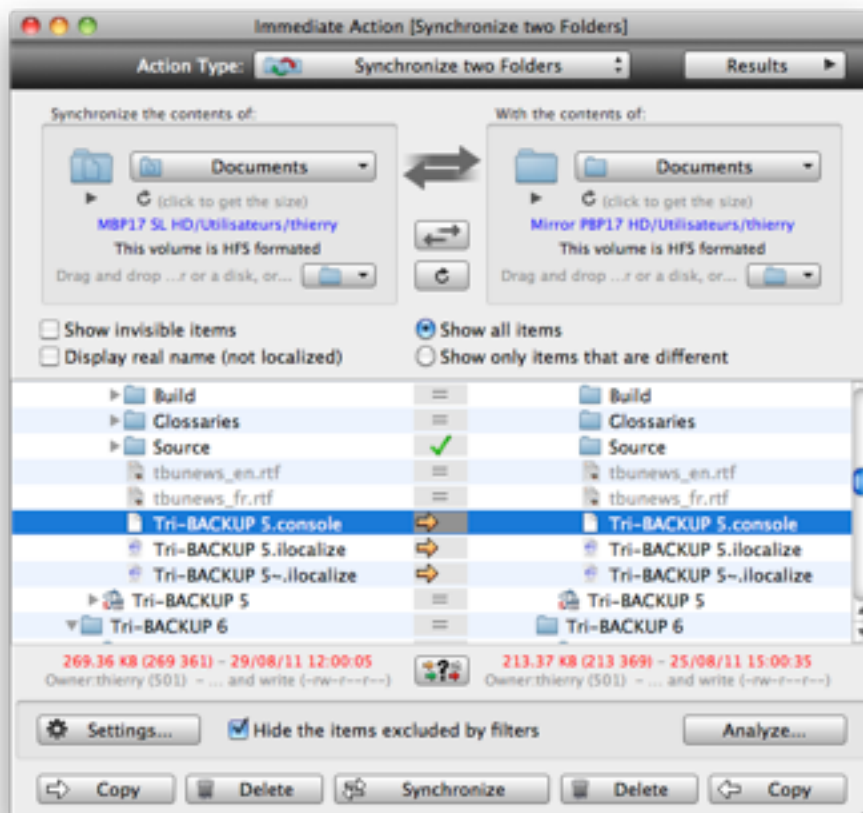
Immediate Actions

The "**Immediate Actions**" were created to visualize and compare the contents of folders or disks, if you wish to check the content, or to choose specific files or folders to copy or treated.

It is advisable to use any of the programmed actions for normal operation, and immediate actions to book when you want to copy or handle some things that you want to manually select.

Organization of the window

A window is opened for each of the immediate actions that you open. It includes settings and a list that displays the contents of selected folders or drives.



Menu type of action

At the top (in the black band) is a popup menu to choose the type of action.

You can also choose from this menu one of the programmed actions you have created (and thus take the appropriate settings).

If you change the type of action, the settings and the buttons are modified (if necessary) to accommodate the new type.

Note: If the settings are compatible, they are kept (for example, a "copy" action changed to "synchronization" will take the same folders but the buttons at the bottom and the presentation of the list will be changed).

Areas of folders selection

Below the menu are areas where you can choose the folder (or disk) to process. You can drag and drop a folder or disk on one of these areas, or use the popup menu at the bottom right in the box to select the desired folder.

Note: The menu offers a list of folders or disks you have recently viewed.

Display options

Invisible items: This displays (or hides) the invisible files and folders in the list.

Real names: This option displays (or hides) the real names (not translated).

Note: Mac OS X automatically translates certain folder names when displaying the Finder windows (for example, "Library" will be translated).

View All / Only differences: The items identical in both cases are normally displayed in gray. With this option, you can hide them so that only the differences in the list are displayed (this reduces the content of the list making it easier to find items to be copied).

Hide the items excluded by filters (bottom): The settings allow you to add filters to exclude certain files or folders. This displays (or hides) the items excluded by these filters.

The list of contents

The list shows one or two columns (depending on the type of action) and presents the content in the form of hierarchical list sorted alphabetically.

When the list displays the contents of two folders (ie with two columns), Tri-BACKUP displays on the same row items of the same name on both sides. If an item is present only in one folder, it is only displayed on one side. The center column displays information as icons (same or different items, etc.).

Certain actions (delete, compress, etc..) only shows one column. The list displays the contents on the left and information icons on the right.

Information on selection

When an item is selected in the list, the size, date, owner, etc.. are displayed at the bottom of the list. If a folder or a package is selected, Tri-BACKUP shows its size and the number of items.

Note: Differences are indicated in red. For example, if a file is selected and is present in both folders (then displayed in two columns), a size in red indicates that the sizes of the two files are different.

Settings and execution buttons

At the bottom of the window are buttons for various settings and the execution of the action. These buttons are dependent of the type of action chosen.

Settings

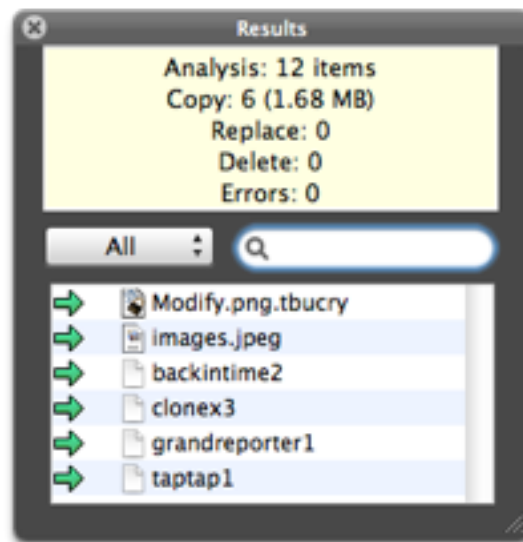
For immediate action, you have the same options and same filters as for the programmed actions. Click the Settings button to open a window for editing the settings.

See the guide of the editor of programmed actions for more details.

Note: Some tabs are grayed out in the editor (as trigger) because these settings are not available for immediate action.

Analyze

Immediate actions allow you to launch an analysis of the selected items. The analysis does not change the contents but displays items that should be copied or modified if you launch the execution of the action.



During an analysis, the output window shows the summary and found items (with an icon for the type of operation to do for this element).

Note: You can display (or hide) the window by the button "Results" in the upper right corner of the Immediate Action window.

The results window contains a menu and a search field to display only certain items.

If you click an item in the list, it is displayed in the main list of Immediate Action.

Execution of an action

Select from the list files and folders that you want to perform operations, and then click the button corresponding to the chosen action (if multiple buttons are present) at the bottom of the window.

Note: As with the analysis, the results window shows a list of items processed.